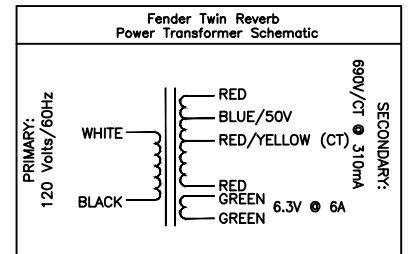
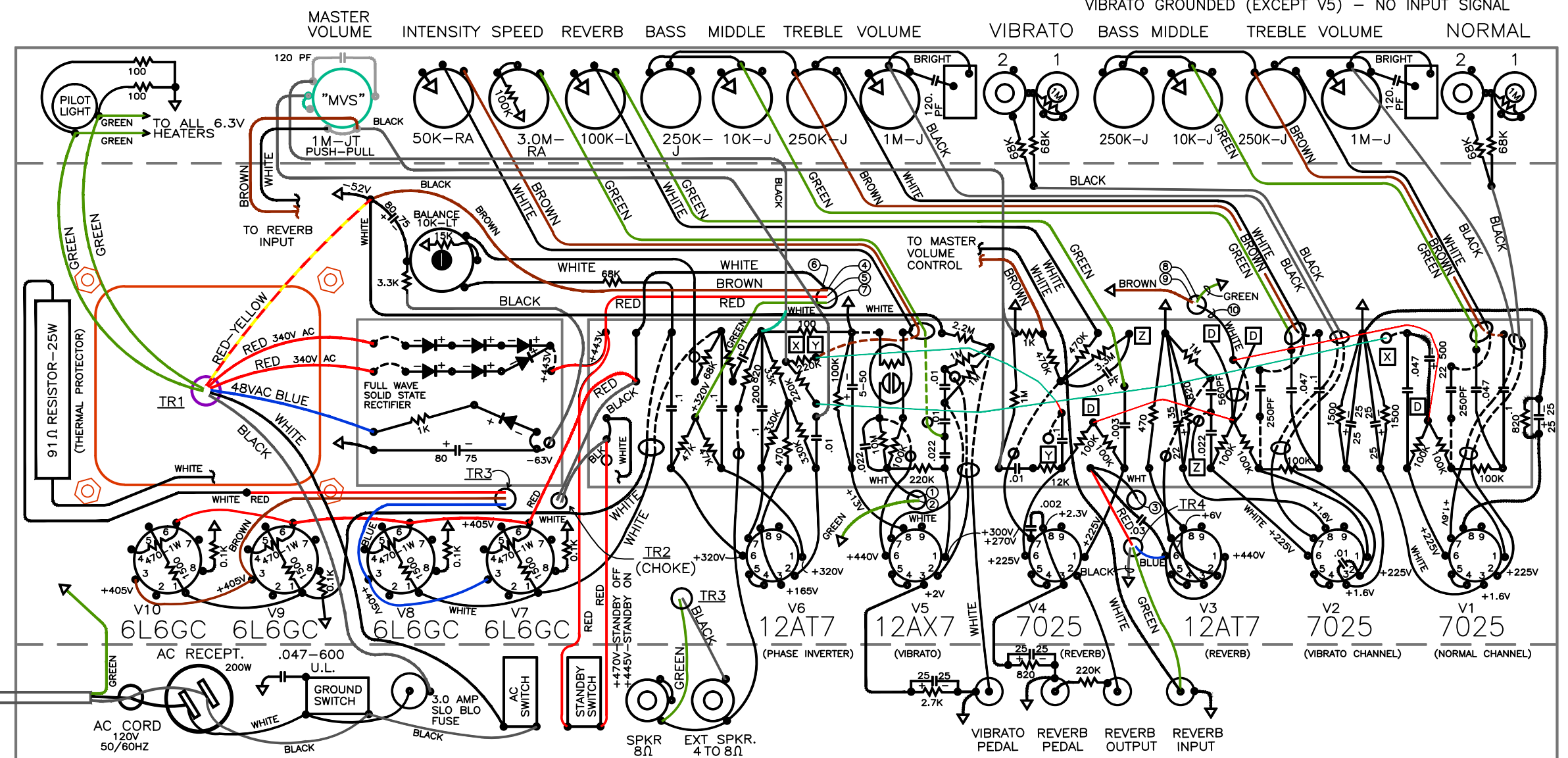


# FENDER "TWIN REVERB-AMP 100W RMS" LAYOUT MODEL WITH REVERB AND VIBRATO

NOTICE

VOLTAGES READ TO GROUND WITH V.T.V.M. WITH VIBRATO GROUNDED (EXCEPT V5) - NO INPUT SIGNAL



TR1 POWER TRANSFORMER  
TR2 CHOKE  
TR3 OUTPUT TRANSFORMER  
TR4 REVERB TRANSFORMER

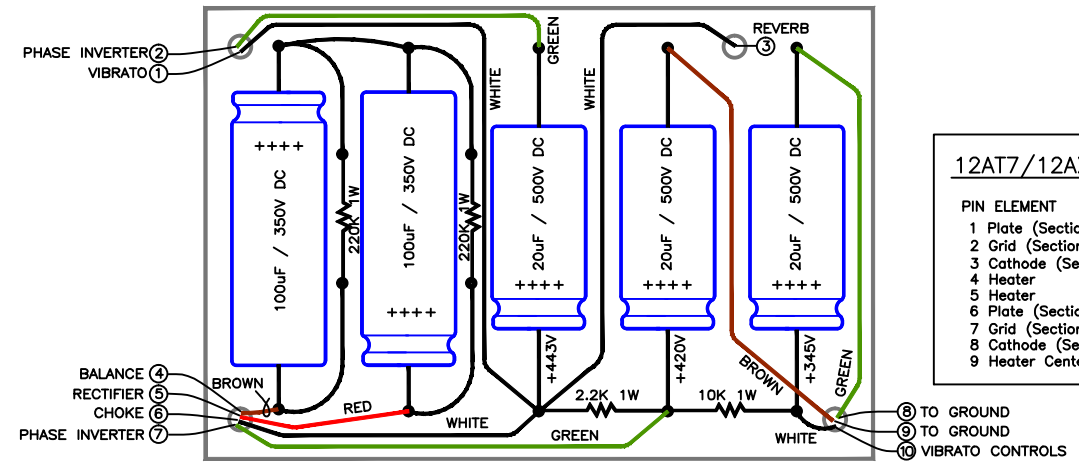
NOTE: ALL RESISTORS 1/2 WATT 10% TOLERANCE, IF NOT SPECIFIED.

NOTES: 1. ALL CAPACITORS AT LEAST 400 VOLT RATING, IF NOT SPECIFIED.  
2. MASTER VOLUME PUSH-PULL SWITCH INDICATED AS "MVS". PUSH IN FOR PURE SOUND.

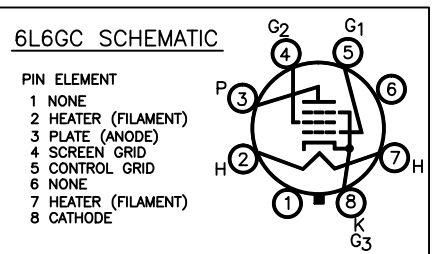
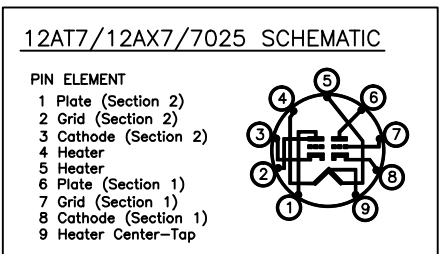
FENDER MUSICAL INSTRUMENTS  
CBS MUSICAL INSTRUMENTS  
A DIVISION OF COLUMBIA BROADCASTING SYSTEMS INC.  
FULLERTON, CALIFORNIA  
U.S.A.

THIS PRODUCT MANUFACTURED UNDER ONE OR MORE OF THE FOLLOWING U.S. PATENTS #2817708, #2973681, #192859 AND PATENTS PENDING.

MASTER VOLUME CONTROL WAS ADDED IN NOVEMBER 1972 AS REV. "F". THIS DRAWING BASED ON AS-BUILT OF 1974 EXAMPLE ALL VALUES GIVEN ARE TAKEN FROM 100W MASTER VOLUME SCHEMATIC



FILTER CAPACITOR LAYOUT



E	INC. ECO 2750 & ECO2053	1-30-70
D	INCORPORATED ECO 1687	10-16-69
C	INCORPORATED ECO 1069	5-29-69

DWN.	F.T.	DATE	<b>Fender</b> MUSICAL INSTRUMENTS SANTA ANA, CALIFORNIA DWG. TITLE <b>SCHEMATIC WIRING</b> <b>DIAGRAM - TWIN REVERB,</b> <b>TUBE TYPE</b>
CHK.		DATE	
APPD.		DATE	
APPD.		DATE	
APPROVAL-			REL NO.
APPROVAL-			SIZE
8-28-69			DWG. NO.
			REV.
			E
SCALE NONE			MODEL TWIN REVERB AMP
			TUBE TYPE
			SHEET 2 OF 2