

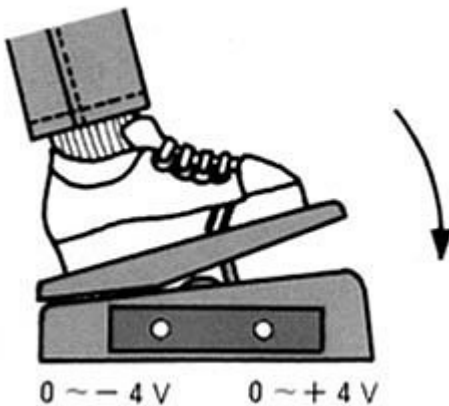
## 1) Introduction [^](#)

The universal foot controller for live performance. Equipped with a voltage processor to provide control voltages for all synthesizer modules. Plus, the built-in attenuator is perfect for volume and vibrato depth variation while performing.

Thank you for choosing the Korg Foot Controller MS-01. The MS-01 is a special type of foot control unit designed to give complete foot control of all synthesizer functions. Besides giving control of each module of the Korg MS-10 and MS-20 synthesizers, this pedal is also equipped with an attenuator so that it can be used to control volume or MG modulation depth.

---

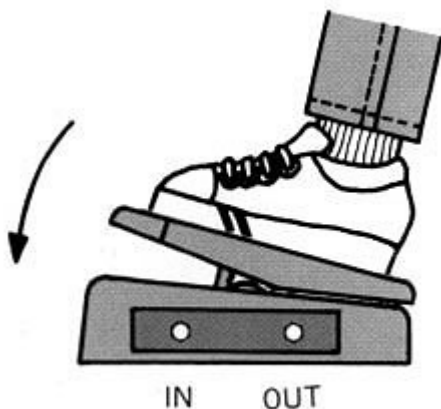
## 2) Voltage Processors [^](#)



When you press down on the pedal with your foot, the output voltage will go from  $0 \sim +4$  or from  $0 \sim -4$ . Choose either the plus or minus output according to your needs. Of course you can also use both the plus and minus outputs at the same time.

---

## 3) Attenuator [^](#)



As the pedal is depressed, the output signal strength increases. In other words, it operates like an ordinary volume pedal.

---

#### 4) Examples of ways to use the Korg Foot Controller: [^](#)

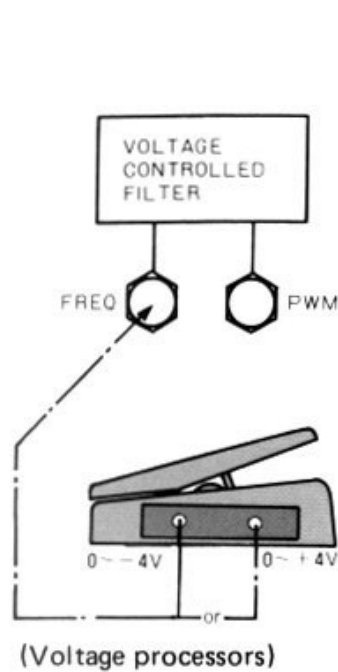


Fig. 1

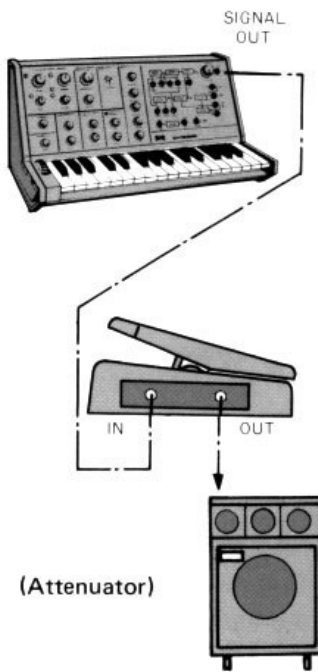


Fig. 2

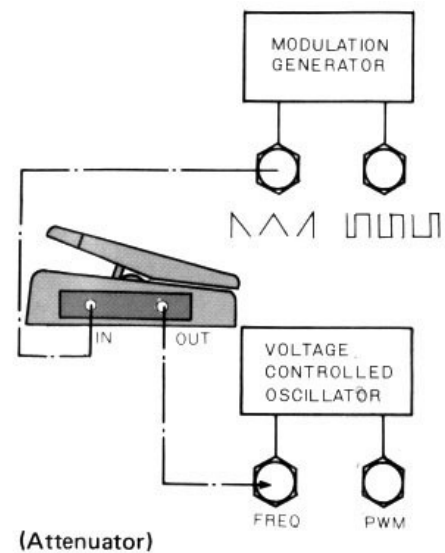


Fig. 3

Figure 1:

By connecting the MS-01 voltage processor section to the VCF cut-off frequency input of your synthesizer, you can use the pedal to vary the cut-off frequency.

If you use the plus output, only the upper frequency range will be left when you press the pedal, thus producing a bright sound. On the other hand, if you use the minus output, the sound produced when you press the pedal will have a rounded tone quality. The effect is clearer if the VCF cut-off frequency knob is turned down slightly.

Figure 2:

You can use the attenuator section of the MS-01 to control volume. Just connect [the] MS-01 between the MS-10 or another synthesizer's SIGNAL OUT output and your amplifier's input. Pressing down on the pedal will increase the volume.

Figure 3:

Another effective way of using the attenuator section of the MS-01 is to control modulation depth. Connect the MS-01 between the modulation generator output and the VCO FREQ IN input of your synthesizer. Pressing the pedal will vary the depth of the vibrato effect.

---

## 5) Specifications [^](#)

### Voltage Processors -

Output voltage: 0 ~ +4V; 0 ~ -4V

### Attenuator -

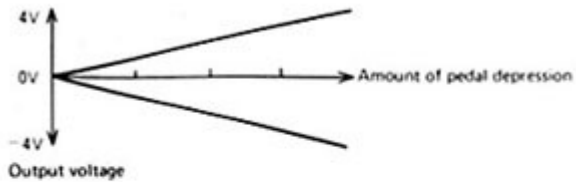
Output: 0 ~ 100%

Power supply: 006P / 9V battery x 1

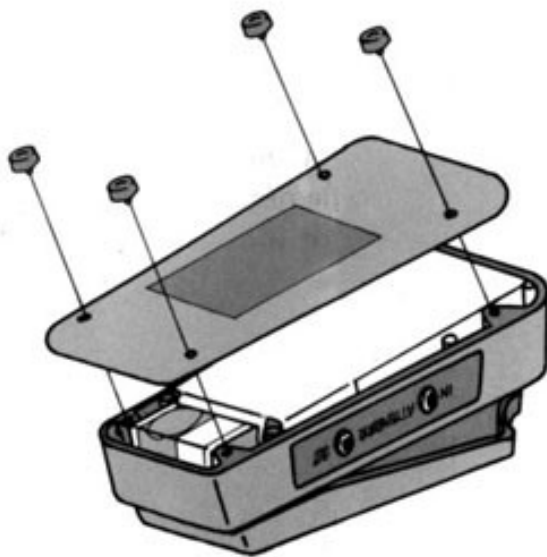
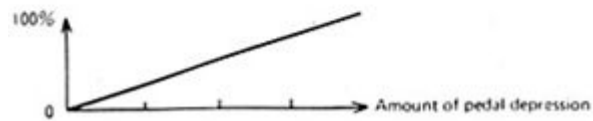
Dimensions (W x D x H): 100 x 250 x 60mm

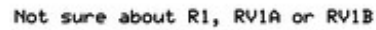
Weight: 0.9kg

#### VOLTAGE PROCESSORS



#### ATTENUATOR





## MS-01 Foot Controller

Rev 1.1  
18/11/201

Page 1 of 1